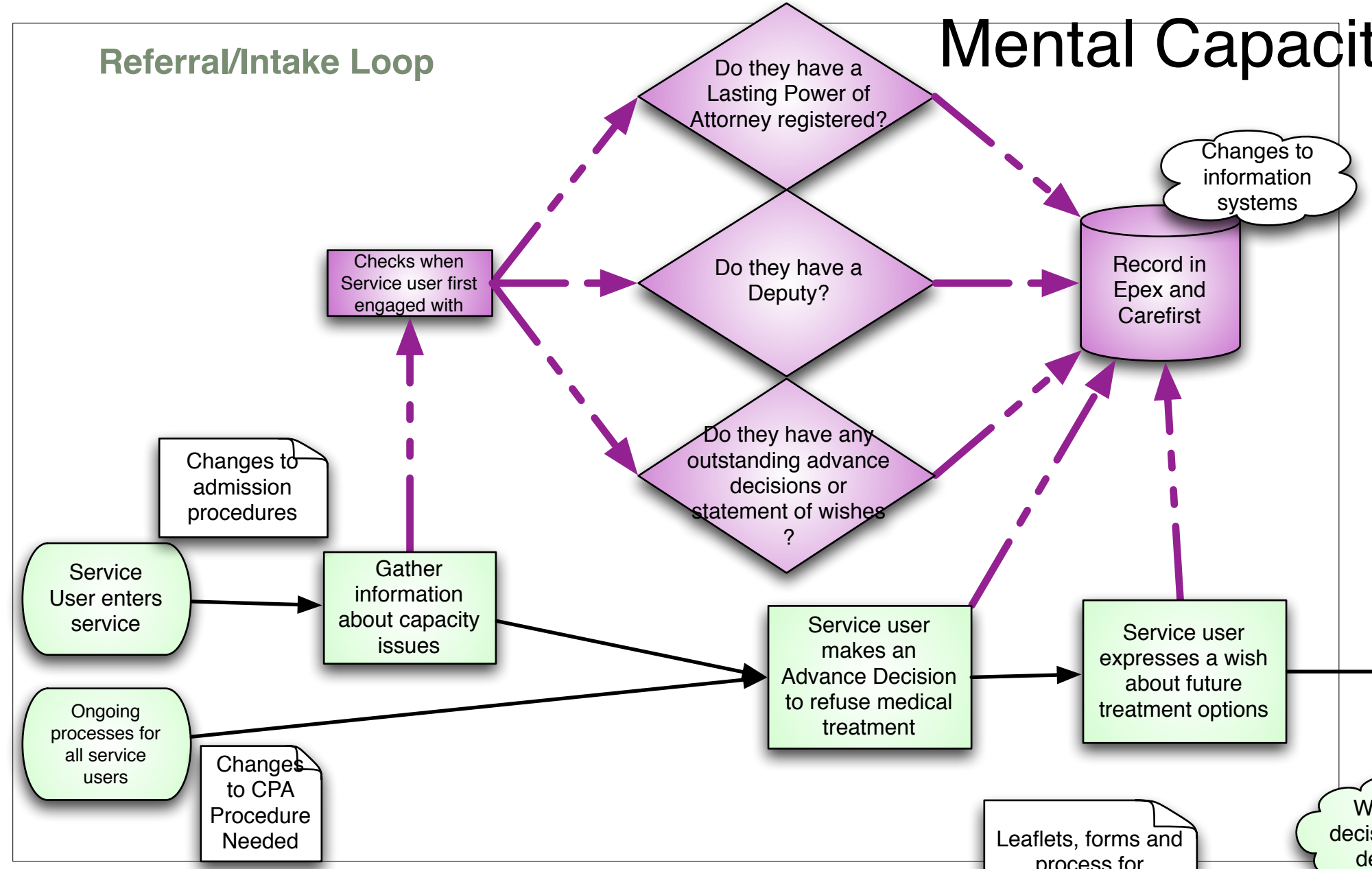


Mental Capacity Act Flowchart

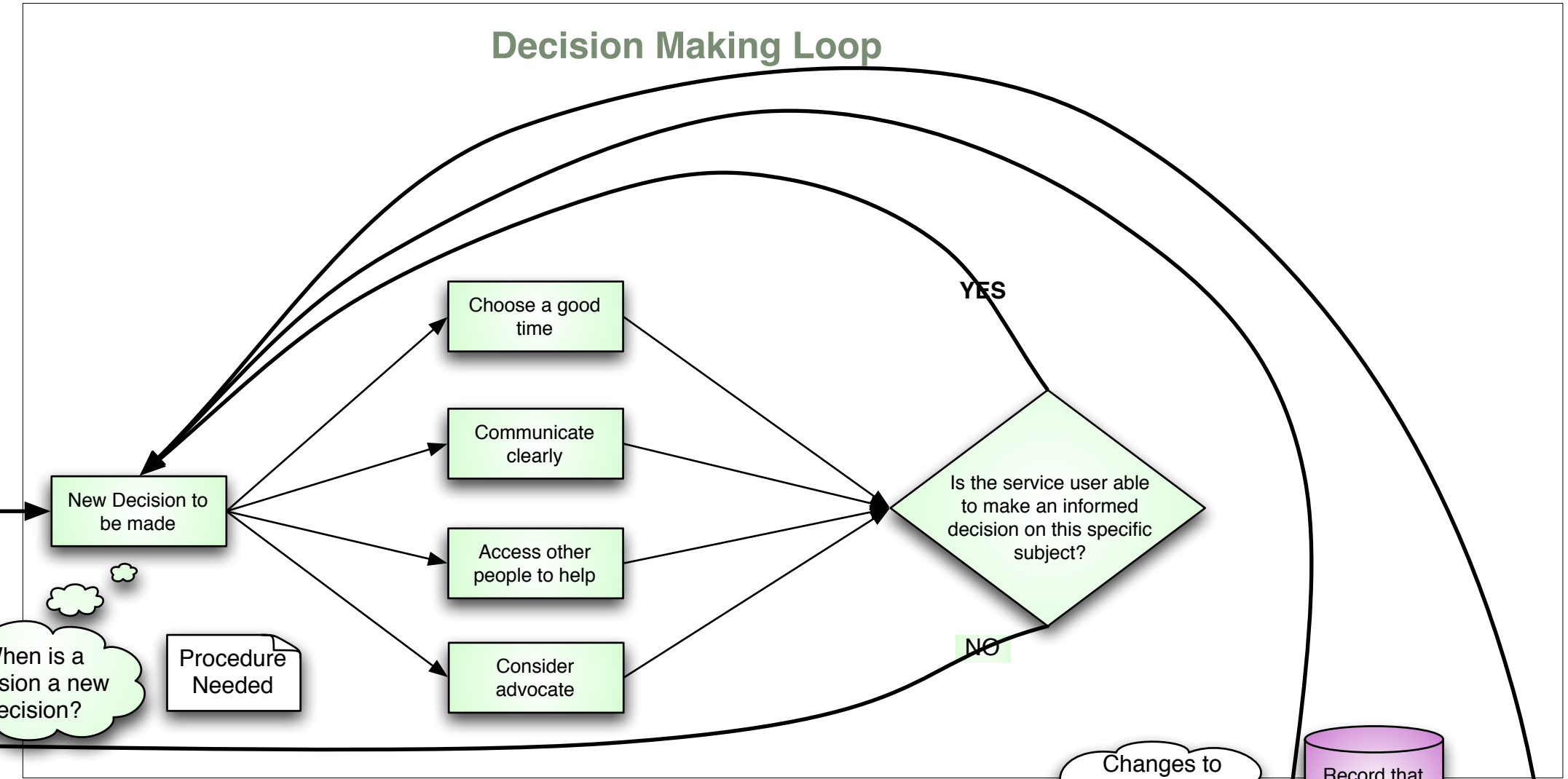
© Jeremy Patton 2006 23rd Nov 2006
OK to COPY!

All Service Users

Referral/Intake Loop



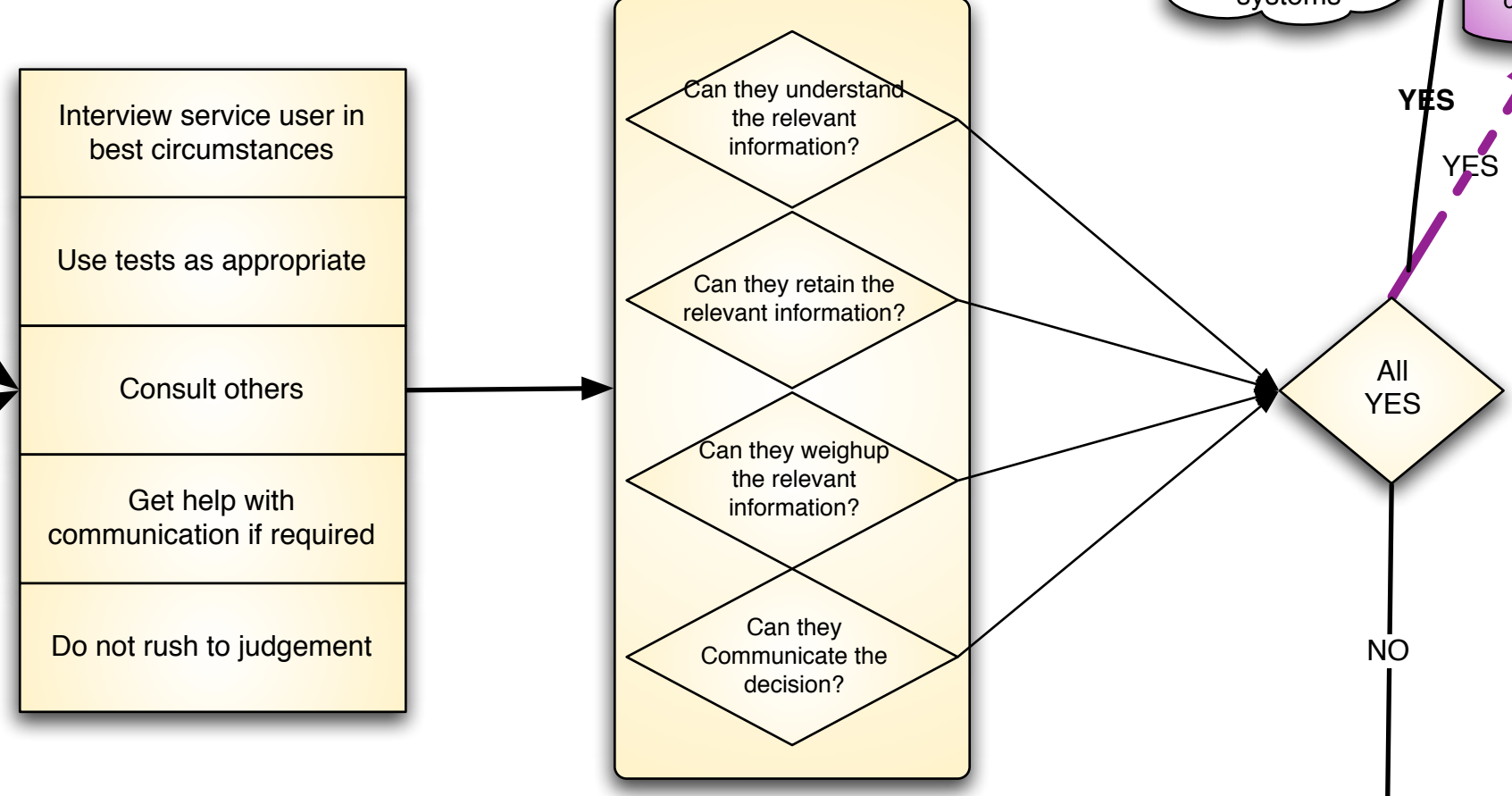
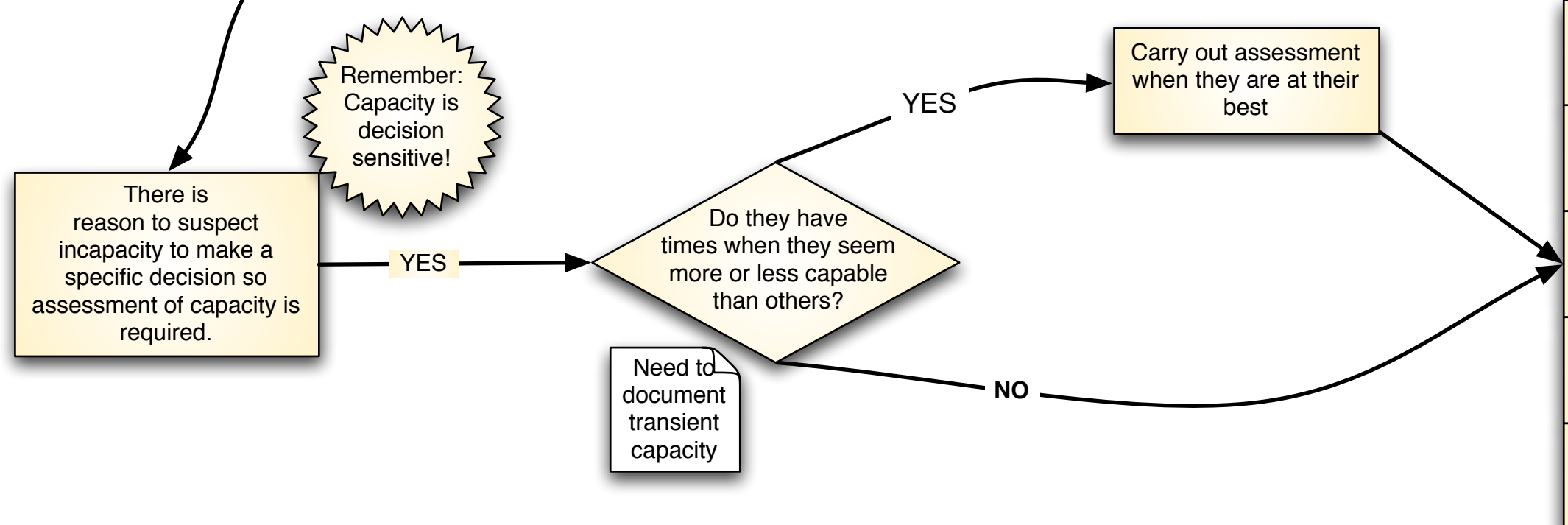
Decision Making Loop



Principles
 1 Assume Capacity
 2 Help people have capacity
 3 People are entitled to make unwise decisions
 4 Decisions for person without Capacity:
 Best Interests
 5 Least Restrictive

Diagnostic Test
 a Impairment or disturbance of mind/brain
 b Can be Permanent or Temporary
 c Age, appearance Condition does not by itself establish lack of capacity

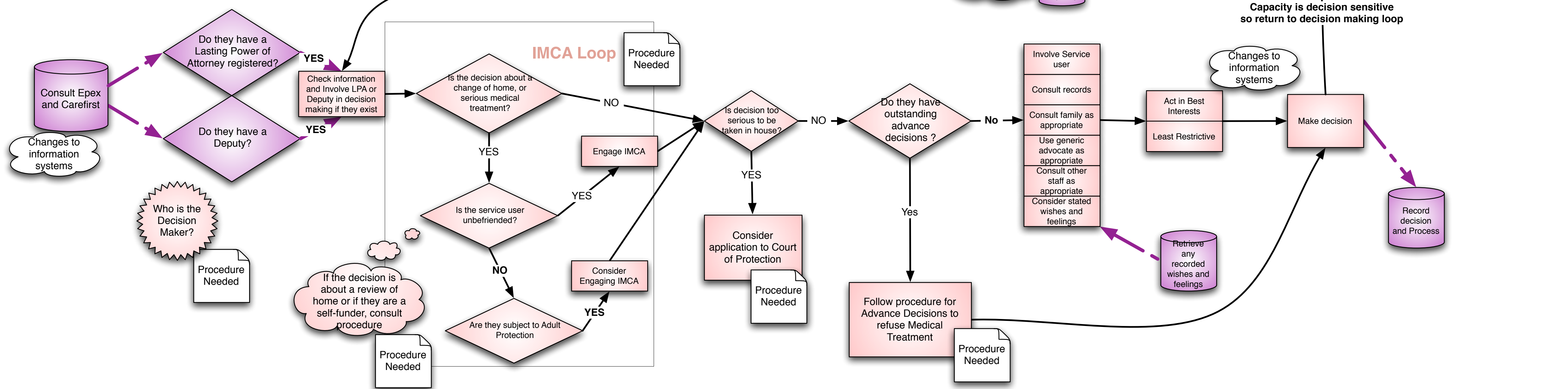
Assessing Capacity



Assessing Capacity
 1 No single test, use range of tools
 2 Decision Sensitive
 3 Don't rush.
 4 Don't push through decision when capacity is lowest

Functional Test
 Unable to understand relevant information
 Unable to retain information
 Cannot use or weigh information
 Cannot communicate decision

Without Capacity



Capacity is decision sensitive so return to decision making loop

IMCA Loop

